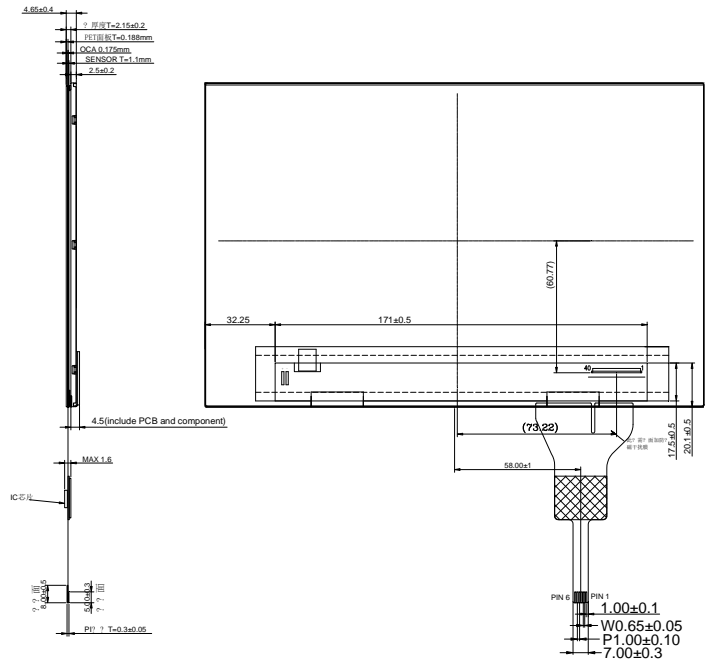
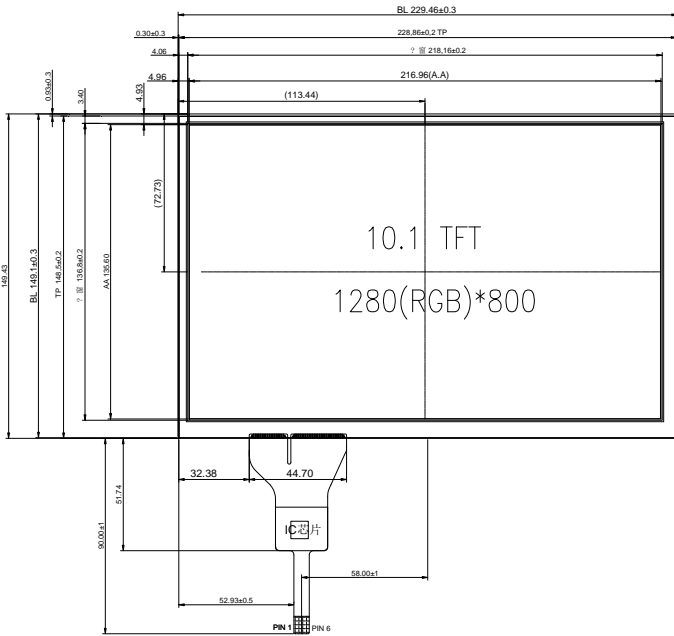


PT101WXGATC-B6 SERIES (1280*RGB*800 DOTS)



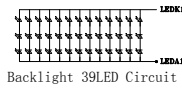
魔誼科技股份有限公司
Palm Technology Co., Ltd.

EXTERNAL DIMENSION



NOTES:

- 1.DISPLAY TYPE: 10.1TFT 1280(RGB)*800
- 2.VIEW DIRECTION: Full viewing
- 3.Polarizer mode:Transmissive/normal black
- 4.OPERATING TEMP: -0°C~+50°C
- 5.STORAGE TEMP: -20°C~+60°C
- 6.Logic power supply voltage:3.3V
- 7.Backlight:White/Vf=8.7~9.9V If=260mA
- 8.ROHS must be complied



PIN CONNECTIONS

| | | | | | | | | | | |
|--------|---------------|------|---------------|-----|---------------|-----|---------|---------------|--------|------|
| PIN NO | 1 | 2 | 3 | 4 | 5 | 6 | 7 | 8 | 9 | 10 |
| SYMBOL | VCOM | VDD | VDD | NC | NC | NC | GND | Rxin0- Rxin0+ | GND | GND |
| PIN NO | 11 | 12 | 13 | 14 | 15 | 16 | 17 | 18 | 19 | 20 |
| SYMBOL | Rxin1- Rxin1+ | GND | Rxin2- Rxin2+ | GND | RxCLK- RxCLK+ | GND | Rxin3- | GND | Rxin3+ | GND |
| PIN NO | 21 | 22 | 23 | 24 | 25 | 26 | 27 | 28 | 29 | 30 |
| SYMBOL | Rxin3+ | GND | NC | NC | GND | NC | LED_PWM | NC | AVDD | GND |
| PIN NO | 31 | 32 | 33 | 34 | 35 | 36 | 37 | 38 | 39 | 40 |
| SYMBOL | LED- | LED- | NC | NC | VGL | NC | CABC_EN | VGH | LED+ | LED+ |

CAPACITIVE TOUCH PANEL

| | | | | | | |
|--------|------|--------|-----|-----|-----|-----|
| PIN NO | 1 | 2 | 3 | 4 | 5 | 6 |
| SYMBOL | REST | VDD3.3 | GND | INT | SDA | SCL |